






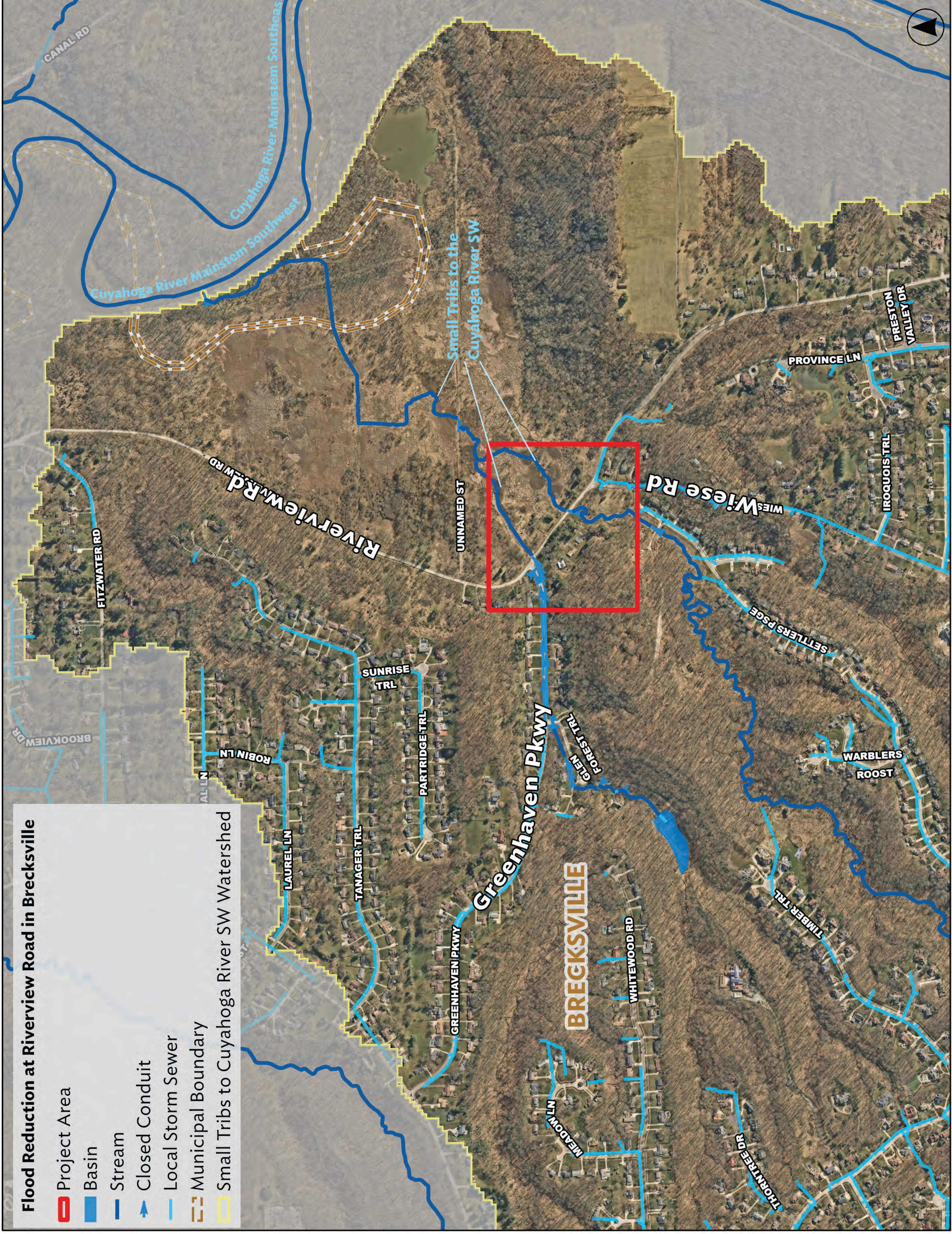


Flood Reduction at Riverview Road in Brecksville

-  Project Area
-  Basin
-  Stream
-  Closed Conduit
-  Local Storm Sewer
-  Municipal Boundary
-  Small Tribs to Cuyahoga River SW Watershed



Flood Reduction at Riverview Road in Brecksville

Project area in relation to the subwatershed



Northeast Ohio Regional Sewer District

REGIONAL STORMWATER MANAGEMENT

Flood Reduction at Riverview Road

PROJECT SUMMARY

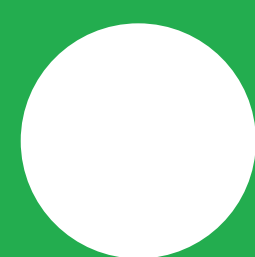
The purpose of this project is to reduce flooding along Riverview Road between Greenhaven Parkway and Wiese Road up to the 100-year storm event. This will be accomplished by raising the elevation of the roadway and increasing the capacity of stormwater conduits in the project area.



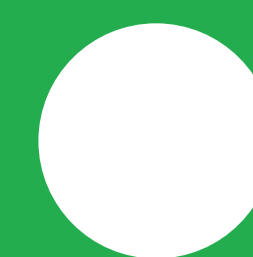
ANTICIPATED PROJECT TIMELINE



PLANNING
JUNE '21-OCT '22



DESIGN
JAN '23-MAR '24

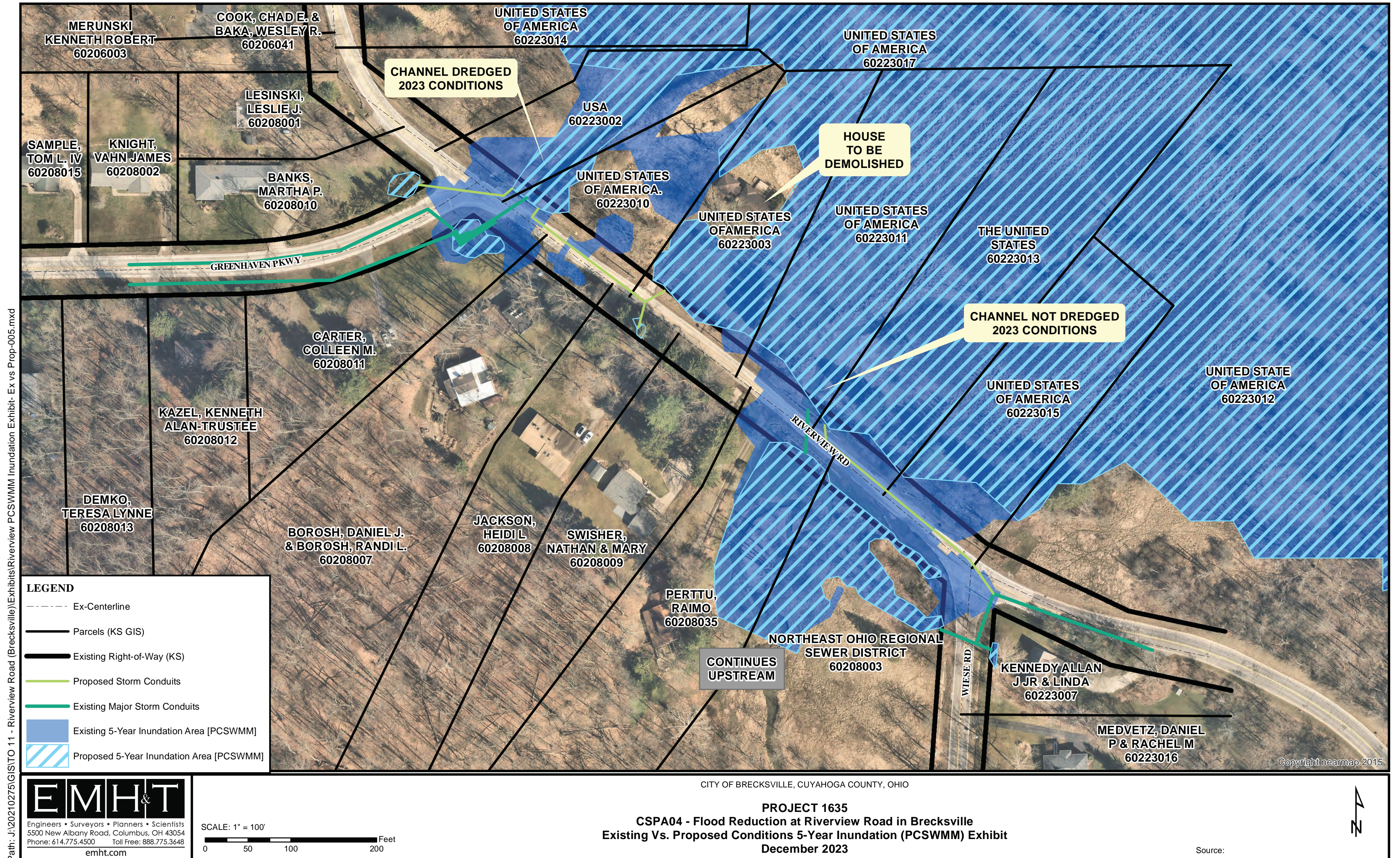


CONSTRUCTION
START: FALL '24

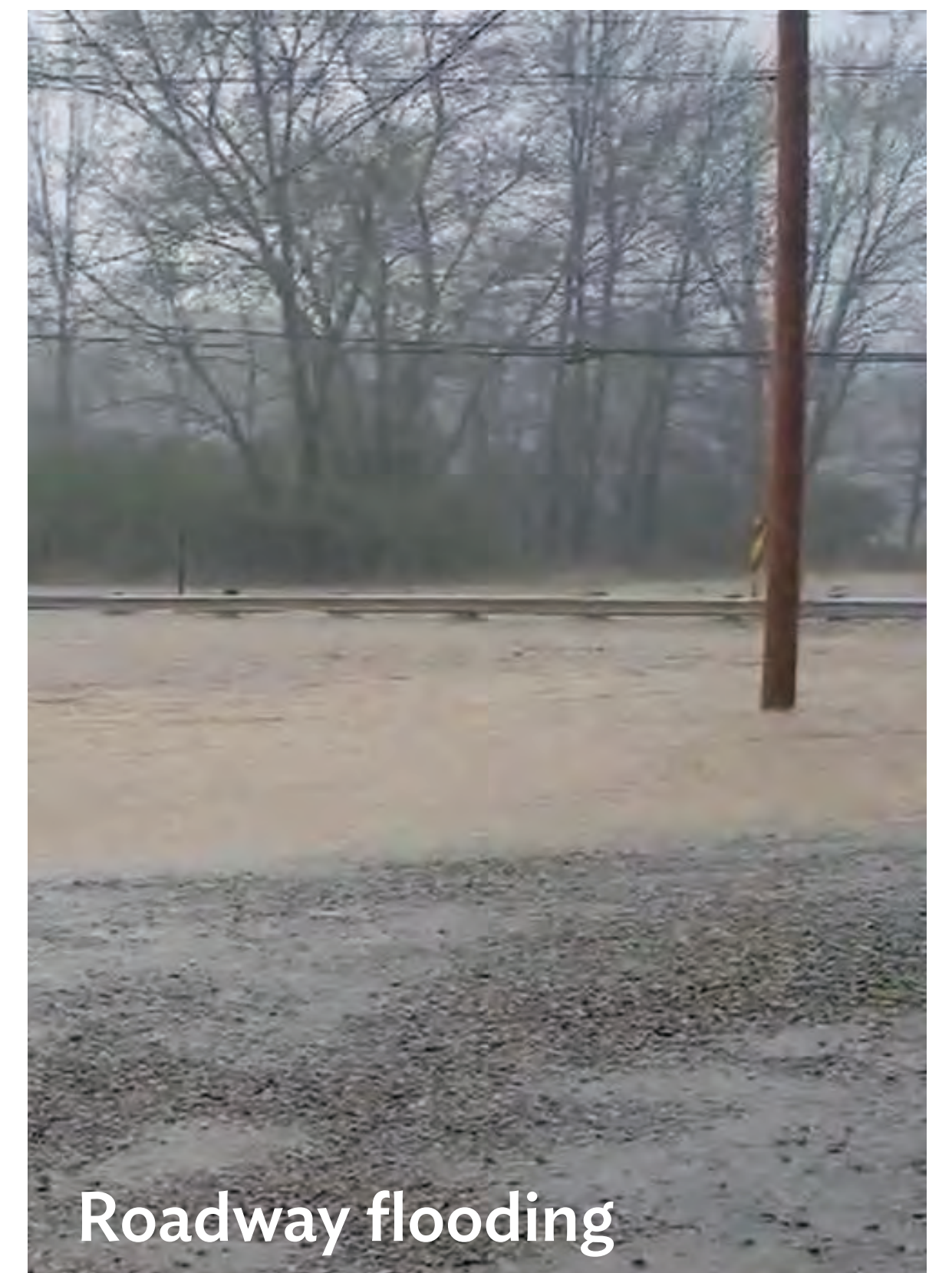
CURRENTLY 90%

Flood Reduction at Riverview Road

EXISTING VS. PROPOSED FLOOD INUNDATION 5-YEAR RAIN EVENT (2.95 INCHES OF RAIN IN 24 HOURS)

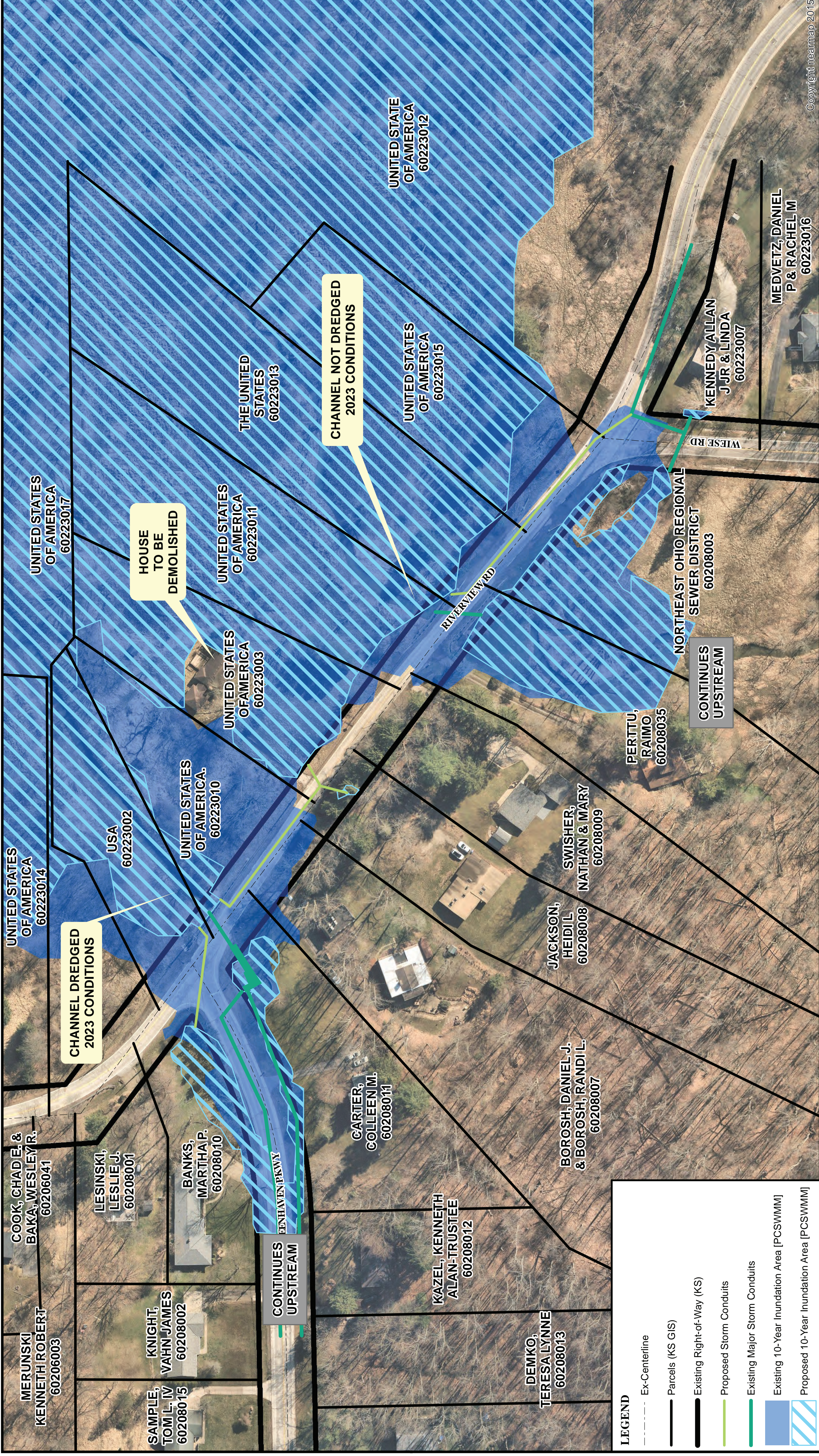


EXAMPLES OF AREA FLOODING AFTER RECENT RAIN EVENTS



EXISTING VS. PROPOSED FLOOD INUNDATION

10-YEAR RAIN EVENT (3.43 INCHES OF RAIN IN 24 HOURS)



PROJECT 1635
 CSP404 - Flood Reduction at Riverview Road in Brecksville
 Existing Vs. Proposed Conditions 10-Year Inundation (PCSWMM) Exhibit
 December 2023

CITY OF BRECKSVILLE, CUYAHOGA COUNTY, OHIO

SCALE: 1" = 100'
 0 50 100 200 Feet

Source:

Sedimentation and flooding are the two main issues within this project area. Erosion upstream has led to sediment accumulated within the currently undersized stormwater system near and along Riverview Road. Development of the upstream watershed, combined with more frequent, high intensity storms as a result of climate change, has increased the erosion in the watershed and has led to more frequent overtopping of Riverview Road.

Path: J:\20210275\GIS\TO 11 - Riverview Road (Brecksville)\Exhibits\Riverview PCSWMM Inundation Exhibit- Ex vs Prop-010.mxd

Flood Reduction at Riverview Road

BEFORE

Looking South, intersection of Greenhaven Parkway and Riverview Road



AFTER



Riverview Road to be raised 4.5 feet at the crown

Flood Reduction at Riverview Road

BEFORE Looking Southeast, intersection of Greenhaven Parkway and Riverview Road



AFTER



Flood Reduction at Riverview Road

BEFORE

Looking East, Greenhaven Parkway towards Riverview Road

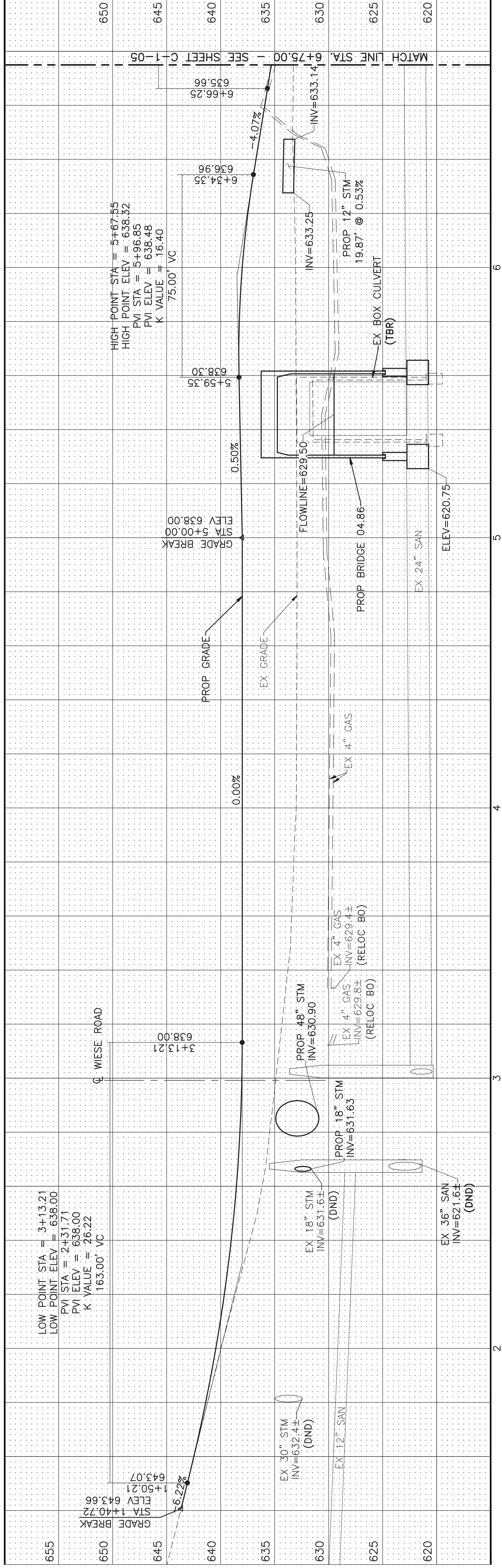
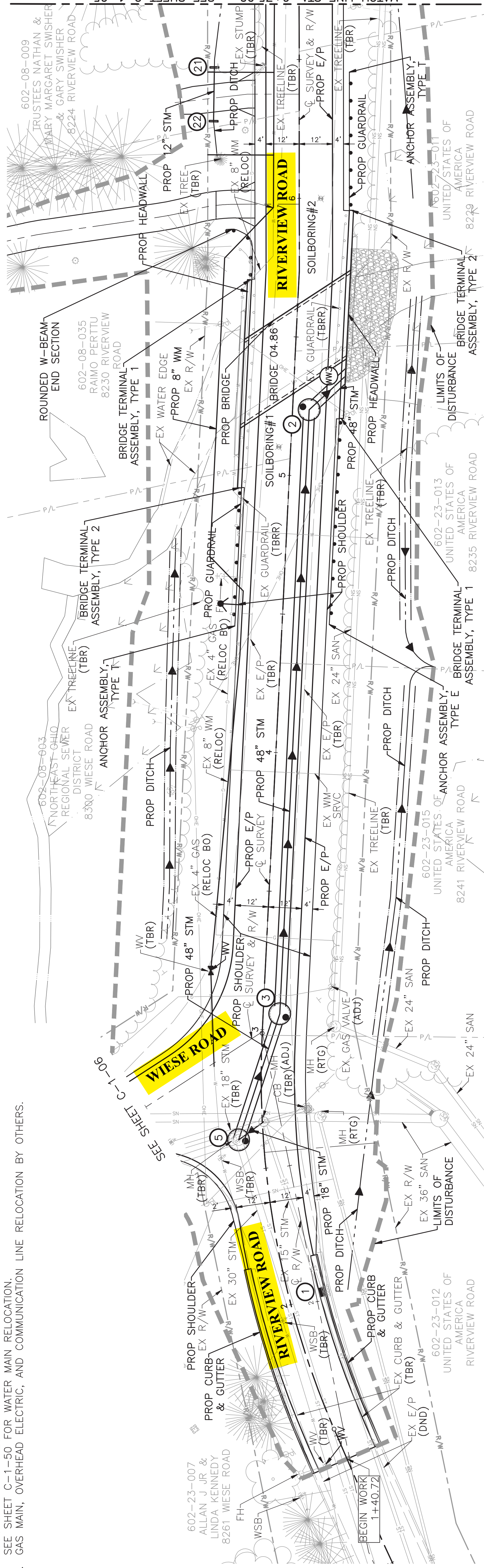


AFTER

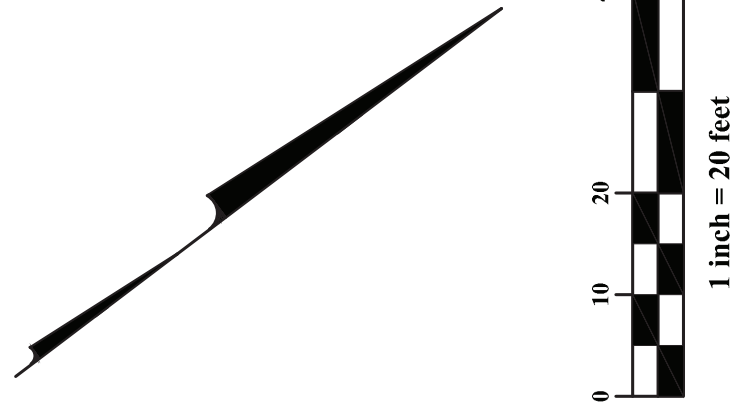


PLAN COORDINATION NOTES:

1. SEE SHEET C-1-50 FOR WATER MAIN RELOCATION.
2. GAS MAIN, OVERHEAD ELECTRIC, AND COMMUNICATION LINE RELOCATION BY OTHERS.



90% DESIGN PLANS



**Northeast Ohio
Regional Sewer District**

REV	DATE	ISSUED BY

DESIGNED BY: _____
 DRAWN BY: _____
 SHEET CHECK'D BY: _____
 CROSS CHECK'D BY: _____
 APPROVED BY: _____
 ISSUED DATE: _____

CITY OF BRECKSVILLE,
 CUYAHOGA COUNTY, OHIO
**CSPA04 - FLOOD REDUCTION AT
 RIVERVIEW ROAD IN BRECKSVILLE**
 PROJECT 1635

RIVERVIEW RD PLAN & PROFILE
 STA. 1+40 TO STA. 6+75

PLAN COORDINATION NOTES:
 1. SEE SHEET C-1-50 FOR WATER MAIN RELOCATION.
 2. GAS MAIN, OVERHEAD ELECTRIC, AND COMMUNICATION LINE RELOCATION BY OTHERS.

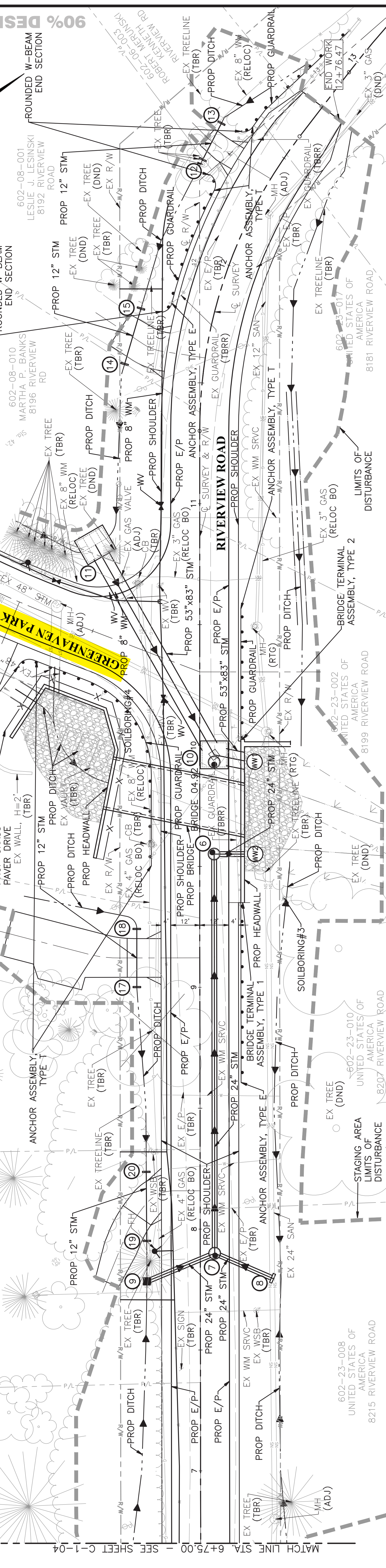
602-08-009
 TRUSTEES NATHAN &
 MARY MARGARET SMISHER
 & GARY SMISHER
 8224 RIVERVIEW ROAD
 HEIDI L. JACKSON
 8214 RIVERVIEW
 ROAD

602-08-007
 DANIEL J. BOROSH &
 RANDI L. BOROSH
 8204 RIVERVIEW
 ROAD

602-08-011
 COLLEEN M. CARTER
 11202 GREENHAVEN
 PKWY

602-08-010
 MARTHA P. BANKS
 8196 RIVERVIEW
 RD

602-08-001
 LESLIE J. LESINSKI
 8192 RIVERVIEW
 ROAD



90% DESIGN PLANS



SEE SHEET C-1-04

SEE SHEET C-1-05

SEE SHEET C-1-06

SEE SHEET C-1-07

SEE SHEET C-1-08

SEE SHEET C-1-09

SEE SHEET C-1-10

SEE SHEET C-1-11

SEE SHEET C-1-12

SEE SHEET C-1-13

SEE SHEET C-1-14

SEE SHEET C-1-15

SEE SHEET C-1-16

SEE SHEET C-1-17

SEE SHEET C-1-18

SEE SHEET C-1-19

SEE SHEET C-1-20

SEE SHEET C-1-21

SEE SHEET C-1-22

SEE SHEET C-1-23

SEE SHEET C-1-24

SEE SHEET C-1-25

SEE SHEET C-1-26

SEE SHEET C-1-27

SEE SHEET C-1-28

SEE SHEET C-1-29

SEE SHEET C-1-30

SEE SHEET C-1-31

SEE SHEET C-1-32

SEE SHEET C-1-33

SEE SHEET C-1-34

SEE SHEET C-1-35

SEE SHEET C-1-36

SEE SHEET C-1-37

SEE SHEET C-1-38

SEE SHEET C-1-39

SEE SHEET C-1-40

SEE SHEET C-1-41

SEE SHEET C-1-42

SEE SHEET C-1-43

SEE SHEET C-1-44

SEE SHEET C-1-45

SEE SHEET C-1-46

SEE SHEET C-1-47

SEE SHEET C-1-48

SEE SHEET C-1-49

SEE SHEET C-1-50

SEE SHEET C-1-51

SEE SHEET C-1-52

SEE SHEET C-1-53

SEE SHEET C-1-54

SEE SHEET C-1-55

SEE SHEET C-1-56

SEE SHEET C-1-57

SEE SHEET C-1-58

SEE SHEET C-1-59

SEE SHEET C-1-60

SEE SHEET C-1-61

SEE SHEET C-1-62

SEE SHEET C-1-63

SEE SHEET C-1-64

SEE SHEET C-1-65

SEE SHEET C-1-66

SEE SHEET C-1-67

SEE SHEET C-1-68

SEE SHEET C-1-69

SEE SHEET C-1-70

SEE SHEET C-1-71

SEE SHEET C-1-72

SEE SHEET C-1-73

SEE SHEET C-1-74

SEE SHEET C-1-75

SEE SHEET C-1-76

SEE SHEET C-1-77

SEE SHEET C-1-78

SEE SHEET C-1-79

SEE SHEET C-1-80

SEE SHEET C-1-81

SEE SHEET C-1-82

SEE SHEET C-1-83

SEE SHEET C-1-84

SEE SHEET C-1-85

SEE SHEET C-1-86

SEE SHEET C-1-87

SEE SHEET C-1-88

SEE SHEET C-1-89

SEE SHEET C-1-90

SEE SHEET C-1-91

SEE SHEET C-1-92

SEE SHEET C-1-93

SEE SHEET C-1-94

SEE SHEET C-1-95

SEE SHEET C-1-96

SEE SHEET C-1-97

SEE SHEET C-1-98

SEE SHEET C-1-99

SEE SHEET C-1-100

SEE SHEET C-1-101

SEE SHEET C-1-102

SEE SHEET C-1-103

SEE SHEET C-1-104

SEE SHEET C-1-105

SEE SHEET C-1-106

SEE SHEET C-1-107

SEE SHEET C-1-108

SEE SHEET C-1-109

SEE SHEET C-1-110

SEE SHEET C-1-111

SEE SHEET C-1-112

SEE SHEET C-1-113

SEE SHEET C-1-114

SEE SHEET C-1-115

SEE SHEET C-1-116

SEE SHEET C-1-117

SEE SHEET C-1-118

SEE SHEET C-1-119

SEE SHEET C-1-120

SEE SHEET C-1-121

SEE SHEET C-1-122

SEE SHEET C-1-123

SEE SHEET C-1-124

SEE SHEET C-1-125

SEE SHEET C-1-126

SEE SHEET C-1-127

SEE SHEET C-1-128

SEE SHEET C-1-129

SEE SHEET C-1-130

SEE SHEET C-1-131

SEE SHEET C-1-132

SEE SHEET C-1-133

SEE SHEET C-1-134

SEE SHEET C-1-135

SEE SHEET C-1-136

SEE SHEET C-1-137

SEE SHEET C-1-138

SEE SHEET C-1-139

SEE SHEET C-1-140

SEE SHEET C-1-141

SEE SHEET C-1-142

SEE SHEET C-1-143

SEE SHEET C-1-144

SEE SHEET C-1-145

SEE SHEET C-1-146

SEE SHEET C-1-147

SEE SHEET C-1-148

SEE SHEET C-1-149

SEE SHEET C-1-150

SEE SHEET C-1-151

SEE SHEET C-1-152

SEE SHEET C-1-153

SEE SHEET C-1-154

SEE SHEET C-1-155

SEE SHEET C-1-156

SEE SHEET C-1-157

SEE SHEET C-1-158

SEE SHEET C-1-159

SEE SHEET C-1-160

SEE SHEET C-1-161

SEE SHEET C-1-162

SEE SHEET C-1-163

SEE SHEET C-1-164

SEE SHEET C-1-165

SEE SHEET C-1-166

SEE SHEET C-1-167

SEE SHEET C-1-168

SEE SHEET C-1-169

SEE SHEET C-1-170

SEE SHEET C-1-171

SEE SHEET C-1-172

SEE SHEET C-1-173

SEE SHEET C-1-174

SEE SHEET C-1-175

SEE SHEET C-1-176

SEE SHEET C-1-177

SEE SHEET C-1-178

SEE SHEET C-1-179

SEE SHEET C-1-180

SEE SHEET C-1-181

SEE SHEET C-1-182

SEE SHEET C-1-183

SEE SHEET C-1-184

SEE SHEET C-1-185

SEE SHEET C-1-186

SEE SHEET C-1-187

SEE SHEET C-1-188

SEE SHEET C-1-189

SEE SHEET C-1-190

SEE SHEET C-1-191

SEE SHEET C-1-192

SEE SHEET C-1-193

SEE SHEET C-1-194

SEE SHEET C-1-195

SEE SHEET C-1-196

SEE SHEET C-1-197

SEE SHEET C-1-198

SEE SHEET C-1-199

SEE SHEET C-1-200

SEE SHEET C-1-201

SEE SHEET C-1-202

SEE SHEET C-1-203

SEE SHEET C-1-204

SEE SHEET C-1-205

SEE SHEET C-1-206

SEE SHEET C-1-207

SEE SHEET C-1-208

SEE SHEET C-1-209

SEE SHEET C-1-210

SEE SHEET C-1-211

SEE SHEET C-1-212

SEE SHEET C-1-213

SEE SHEET C-1-214

SEE SHEET C-1-215

SEE SHEET C-1-216

SEE SHEET C-1-217

SEE SHEET C-1-218

SEE SHEET C-1-219

SEE SHEET C-1-220

SEE SHEET C-1-221

SEE SHEET C-1-222

SEE SHEET C-1-223

SEE SHEET C-1-224

SEE SHEET C-1-225

SEE SHEET C-1-226

SEE SHEET C-1-227

SEE SHEET C-1-228

SEE SHEET C-1-229

SEE SHEET C-1-230

SEE SHEET C-1-231

SEE SHEET C-1-232

SEE SHEET C-1-233

SEE SHEET C-1-234

SEE SHEET C-1-235

SEE SHEET C-1-236

SEE SHEET C-1-237

SEE SHEET C-1-238

SEE SHEET C-1-239

SEE SHEET C-1-240

SEE SHEET C-1-241

SEE SHEET C-1-242

SEE SHEET C-1-243

SEE SHEET C-1-244