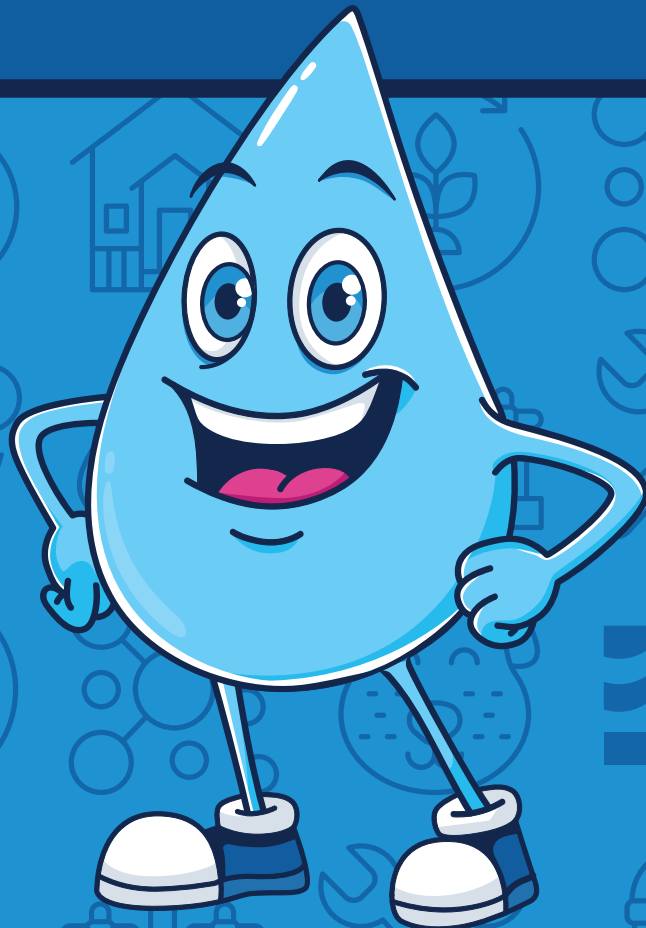


Wally Waterdrop and NEORSD's

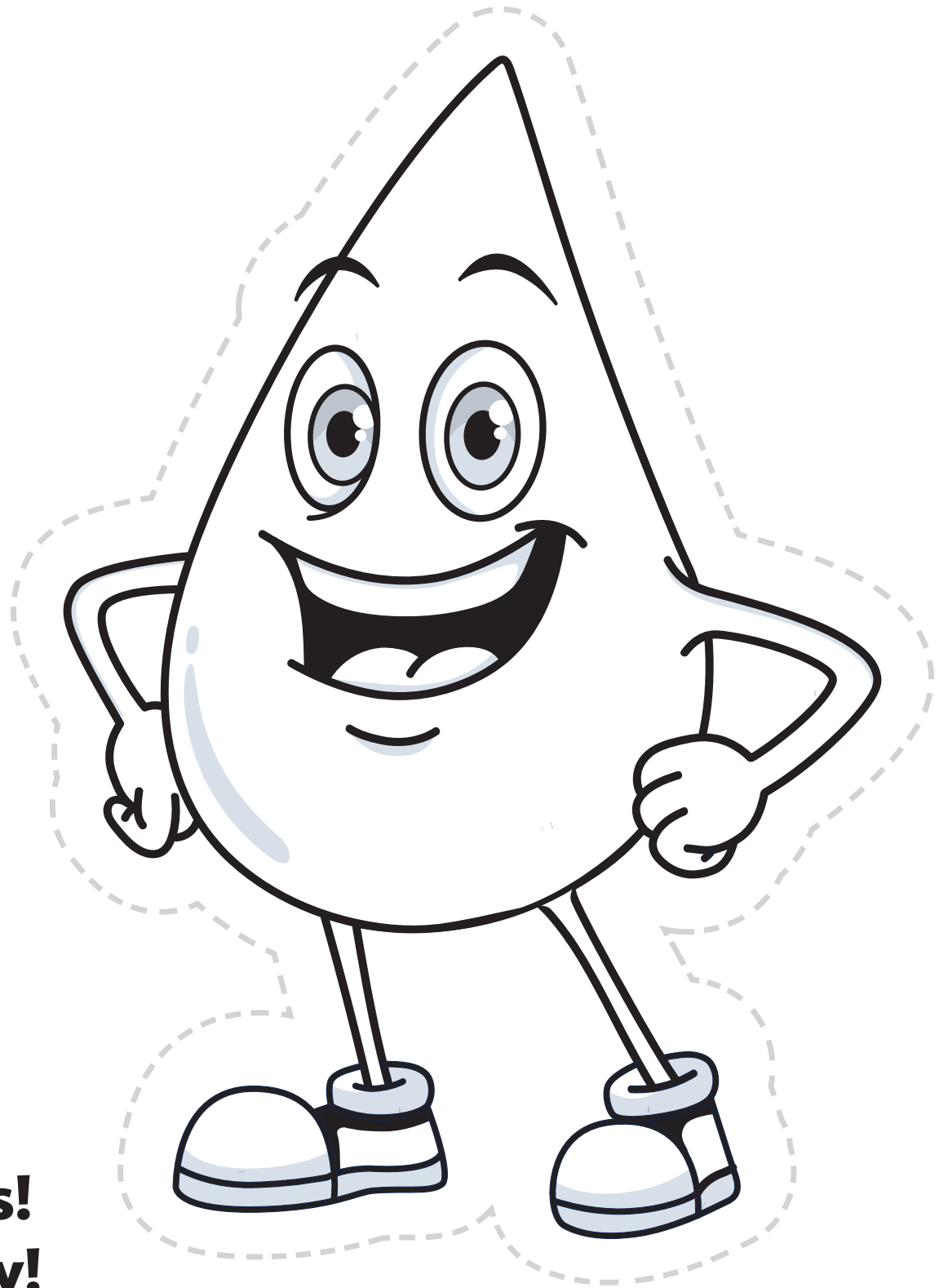
WHERE DOES

IT GO?

ACTIVITY BOOK



 Northeast
 Ohio Regional
 Sewer District



**Hey, kids!
I'm Wally!**

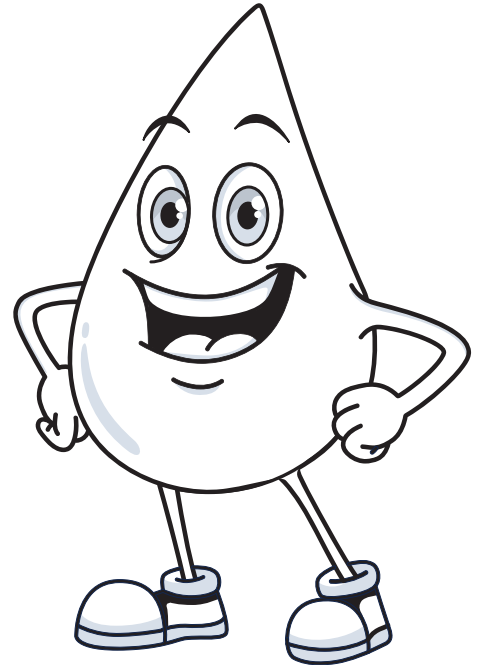
Color me and cut me out. Put me somewhere in your house or in nature that shows how you can protect water around you.

Take a picture and send it to wallysworld@neorsd.org and we'll share it on Twitter and Instagram @neorsd!

Where does it go?

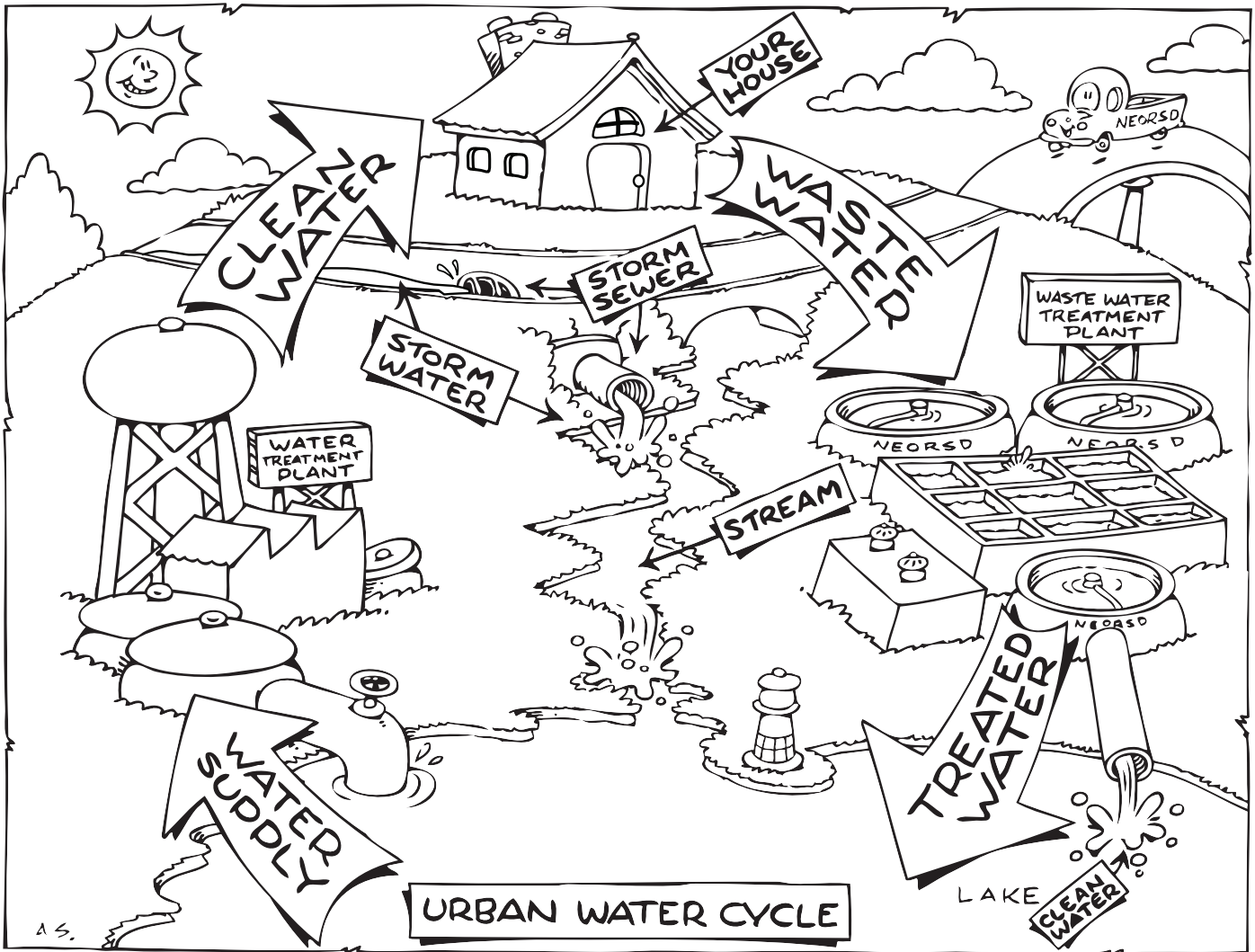
Water is all around us. It falls from the sky, runs in rivers, and flows down drains, but where does it all go?

Wally Waterdrop knows where it goes, how it flows, and how we're all part of the water cycle. Let's learn more together!



When you flush your toilet, where do you think all the dirty water goes? **Write your answer or draw a picture.**

After it rains, you can see rain water on the sidewalks, parking lots and streets. Where do you think all of that water goes?



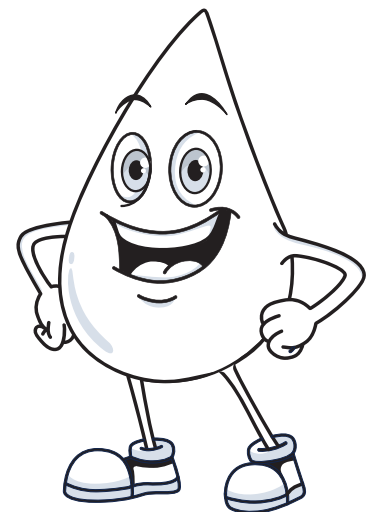
How the water cycle works

In cities like Cleveland and across Northeast Ohio, water moves in a cycle called the urban water cycle. In our area, our water comes from Lake Erie and then flows all the way back to Lake Erie after it has been cleaned!

TWO QUICK QUESTIONS!

Where does the water in your house come from?

Who cleans the water that leaves your house?



Who works with Wally?

It takes many different people doing many different jobs to keep Lake Erie and the Cuyahoga River clean. Look at the pictures below and match the tools with the job. Some tools are used by many jobs!



Chemist

A chemist works in a laboratory.

Maintenance worker

A maintenance worker can fix broken pipes.

Equipment operator

An equipment operator uses heavy machines to move, build, and fix things.

Biologist

A biologist studies nature. They share important information with other people.

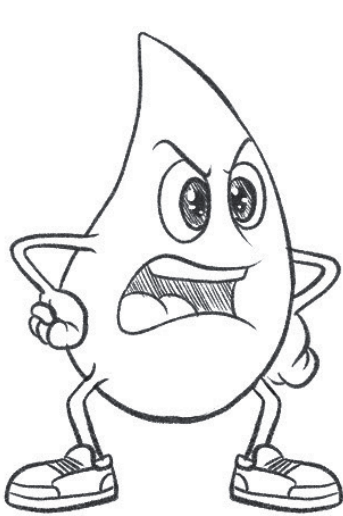
Security officer

Security officers keep people and property safe.

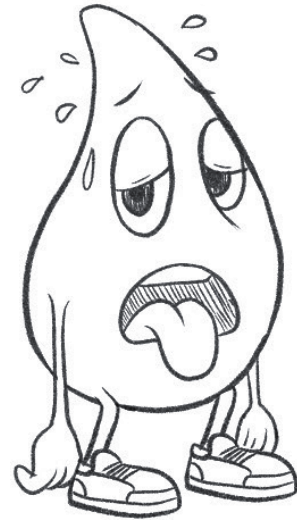
How many people work for the Sewer District? The Sewer District has 700 employees doing more than 200 different jobs!

How is Wally feeling today?

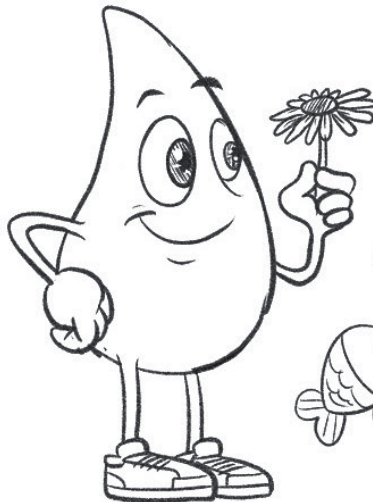
Wally Waterdrop loves to draw, and here he drew pictures of his feelings. How is Wally feeling in these drawings, and what might make him feel this way? Add some color, too!

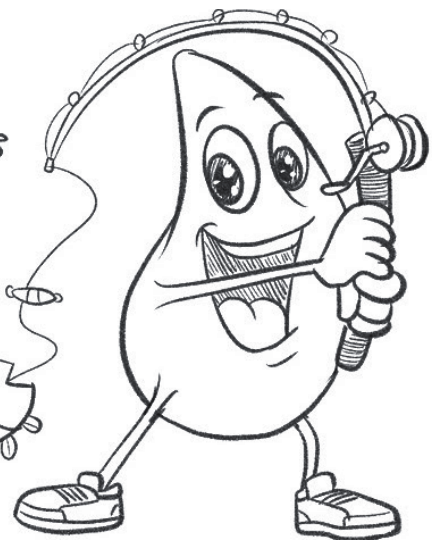








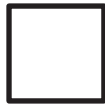




How does dirty water get clean?

A wastewater treatment plant cleans dirty water, and it takes many steps to clean water safely.

Wally drew 4 steps in the wastewater treatment process, but they are out of order. Can you number the pictures from 1 to 4 in order, from start to finish?



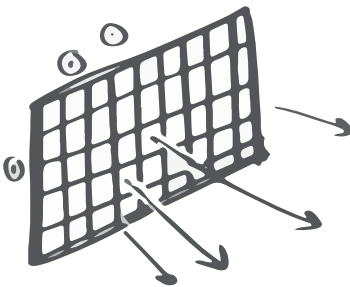
Primary

Primary treatment slows the water down to let solids sink to the bottom and grease float to the surface. The solids are removed safely!



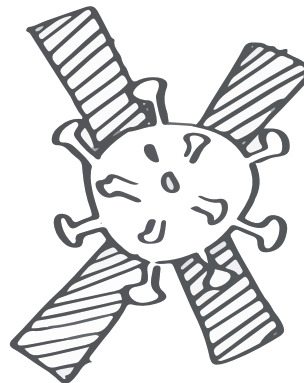
Secondary

During secondary treatment, tiny helpers called microorganisms eat waste that has been dissolved in the water.



Preliminary

Preliminary treatment removes debris like cans, leaves, and rocks from the water.



Disinfection

Disinfection removes germs called bacteria right before the water goes back to our river and lake.

Wally's Words

Can you find these clean-water words?

BEACH
CLEAN
CYCLE
ENVIRONMENT
HEALTH

LAKE
RAINFALL
REGIONAL
RESTORATION
RIVER

SEWER
STREAM
TREATMENT
WATER
WATERSHED

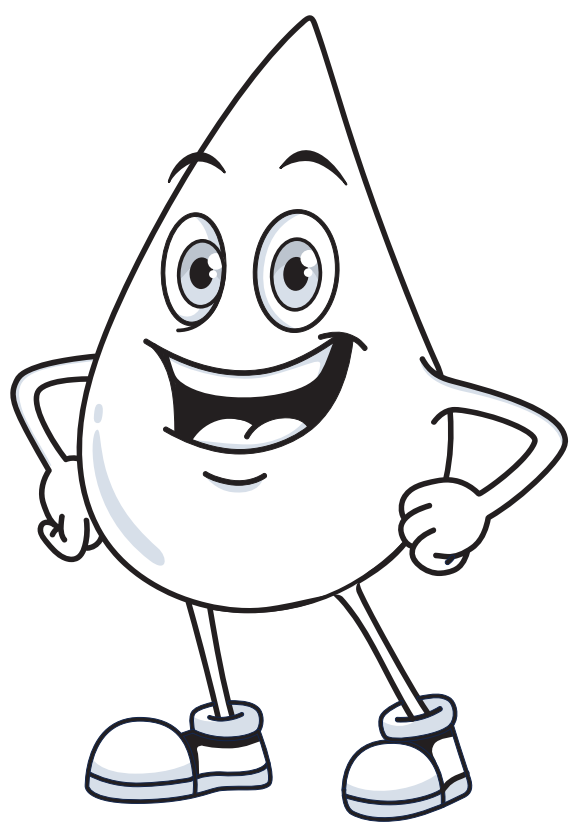
W	C	E	A	M	M	T	A	W	L	A	K	E	K	E
A	J	N	J	R	E	V	I	R	R	E	C	A	L	J
T	J	V	B	S	X	D	S	G	W	V	R	L	L	Y
E	L	I	K	X	B	V	F	U	V	E	L	V	A	U
R	O	R	H	E	A	L	T	H	S	M	B	N	F	T
Y	S	O	D	T	N	E	M	T	A	E	R	T	N	P
D	X	N	S	E	J	S	O	V	A	F	L	A	I	Y
W	W	M	U	R	H	R	T	C	N	A	X	E	A	J
Q	N	E	N	I	A	S	H	R	N	A	L	Q	R	R
Y	X	N	L	T	V	X	R	O	E	C	E	V	R	E
O	A	T	I	X	K	M	I	E	Y	A	E	L	B	W
J	N	O	H	C	K	G	J	C	T	H	M	T	C	E
O	N	V	L	X	E	N	W	T	Z	A	I	M	X	S
S	D	H	A	R	A	L	V	E	H	M	W	P	W	U
S	Y	P	I	A	P	E	H	N	D	R	U	F	U	E

Water all day long

How many times do you use water every day?
Write down every time you use water at home or
at school in just one day.

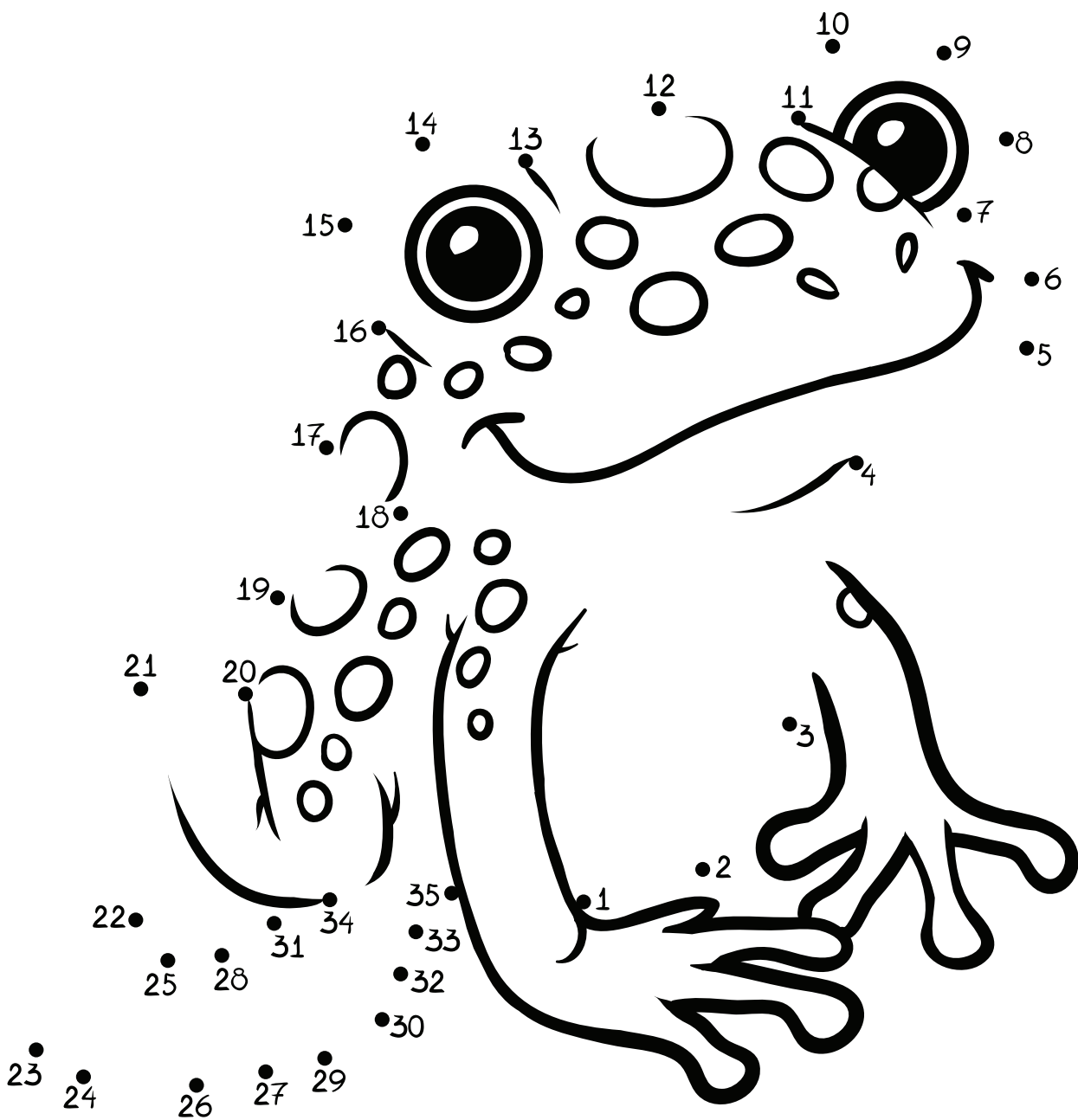
Brushing my teeth

<hr/>	<hr/>
<hr/>	<hr/>
<hr/>	<hr/>
<hr/>	<hr/>
<hr/>	<hr/>
<hr/>	<hr/>
<hr/>	<hr/>
<hr/>	<hr/>
<hr/>	<hr/>
<hr/>	<hr/>
<hr/>	<hr/>
<hr/>	<hr/>
<hr/>	<hr/>
<hr/>	<hr/>
<hr/>	<hr/>
<hr/>	<hr/>
<hr/>	<hr/>
<hr/>	<hr/>
<hr/>	<hr/>
<hr/>	<hr/>
<hr/>	<hr/>
<hr/>	<hr/>



Clean water critters

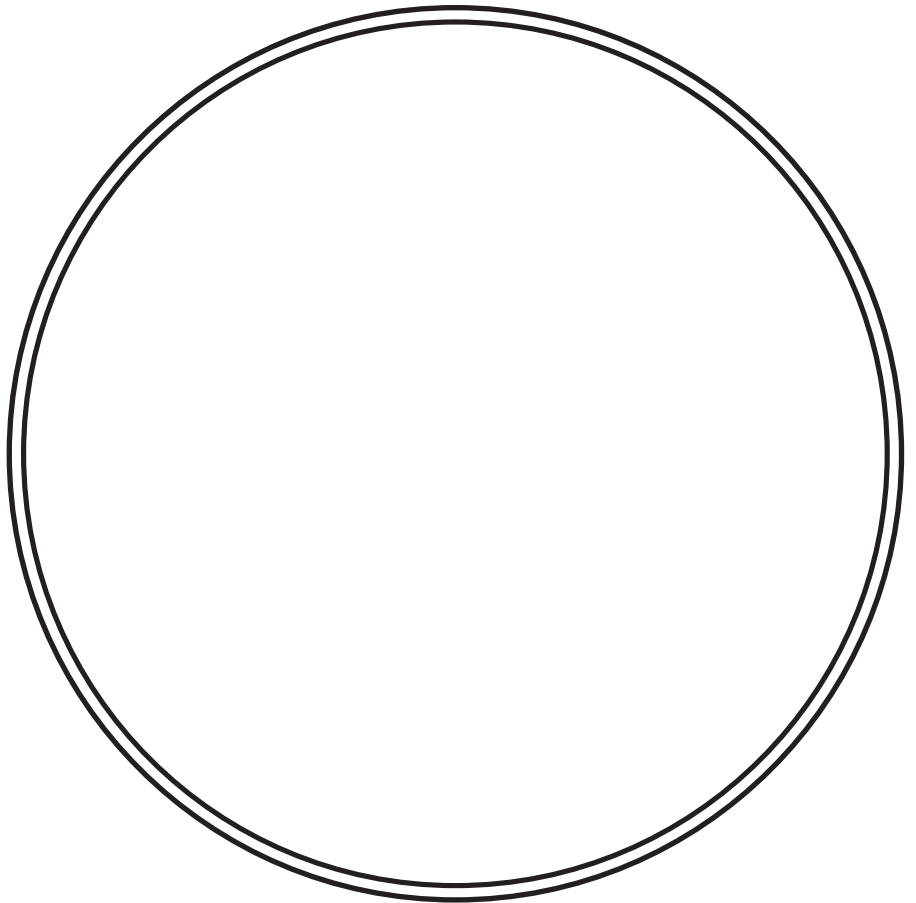
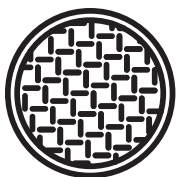
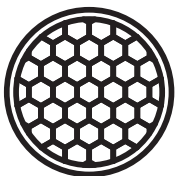
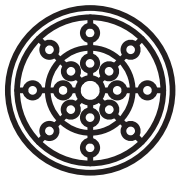
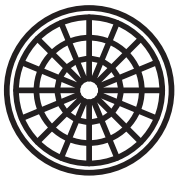
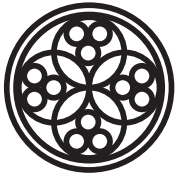
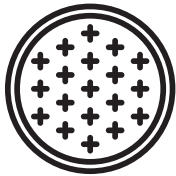
Our work protects Wally's friends that live in clean water. Can you guess what animals they are? Connect the dots and see if you're right!



Super sewer covers!

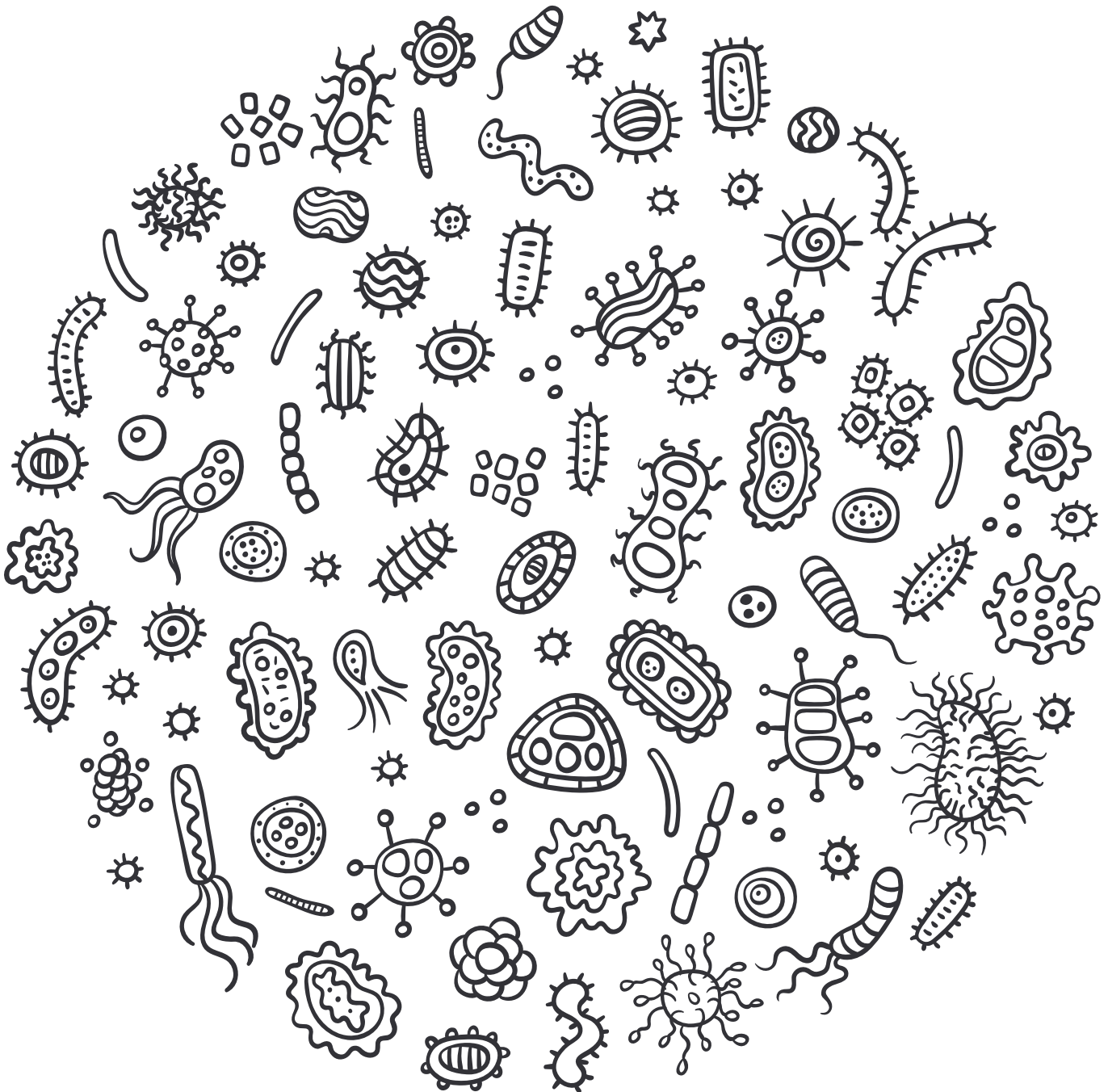
How do workers get into sewers to clean and fix them? In your yard and street are round heavy lids. They cover ladders that lead underground and into sewers.

They come in many sizes and designs. Design your own! What would yours look like?



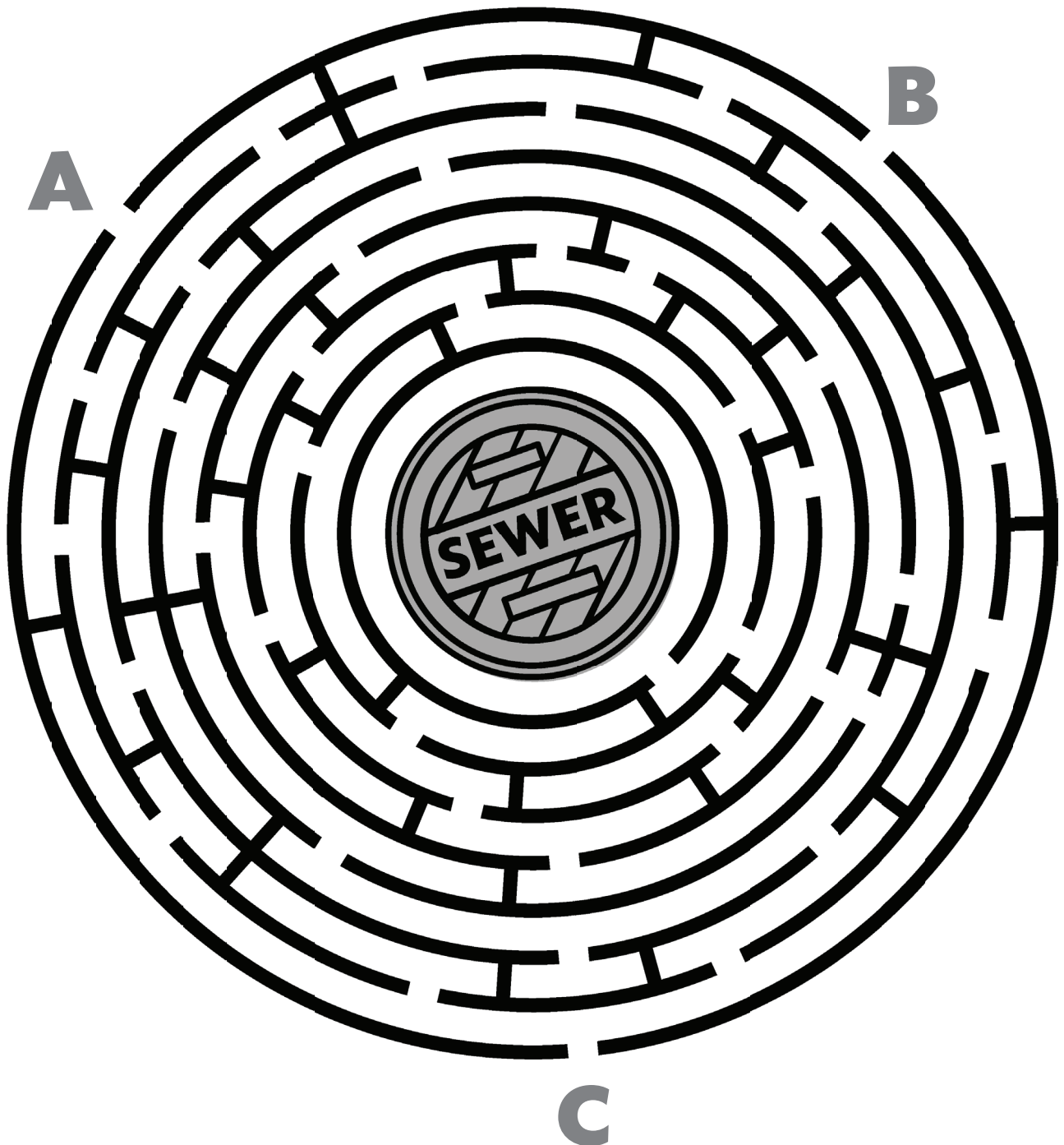
Totally tiny, but heroic helpers!

Teeny tiny critters help clean our dirty water. They are called microorganisms because they are only seen with a microscope. They eat the waste in our sewage to clean water in the treatment process.



Where will the flow go?

It's raining! But not every rain drop flows to the sewer. Find which rain drops reach the sewer drain: A, B, or C?



Be a part of Wally's Clean Water Team!

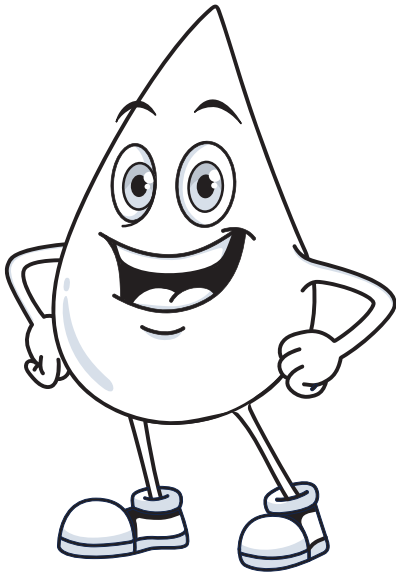
You don't have to be a superhero to protect clean water. There are things we all can do at home to stop pollution and keep our environment healthy. Think of new ways to help our environment, then add your ideas to Wally's lists.

Wally's DO list

1. Recycle.
2. Tell your friends that clean water is important!

Wally's DON'T list

1. Don't let your family pour paint or oil down the drain.
2. Don't throw trash on the street.



Wally's wacky words!

Uh oh! Wally scrambled some very important words! Can you use the definitions to unscramble the letters and spell Wally Waterdrop's words correctly?

STERWATWAE _____

A mix of stormwater and sewage flowing inside a pipe.

TRWEATROSM _____

Rain that has fallen to the earth and flows towards sewers and streams.

RENCEPTIOR _____

A large sewer that collects flow from many other sewers.

HDESTWARE _____

The land through which all water flows as it enters a body of water like a stream, lake, or ocean.

